

2020

1.	3
2	3
2.1	3
2.2	4
2.3	4
3	5
3.1	5
3.2	5
3.2.1	5
3.2.2	5
3.2.3	6
3.2.4	6
3.3	6
3.4	7
3.5	7
3.6	

1.

2

2.1

			913707257986984864
			E118 59 55
			N37 14 36
			0536-6773990
			0536-6773990
			262404
	6000 /	/	

2007 03 01

1000

4500

6000 /

37

2713

6127

6000 /

,

ISO9001:2008

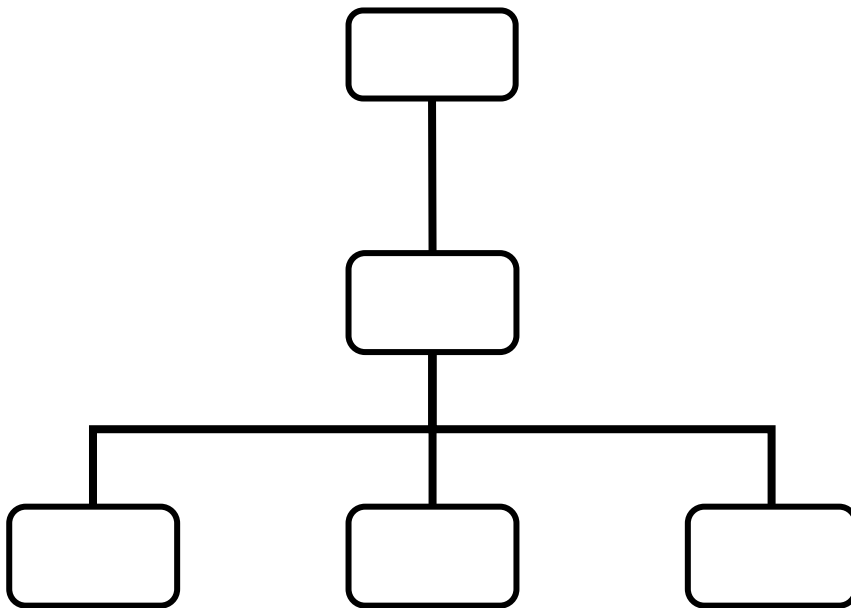
OHSAS18001 2007

ISO14001 2004

ISO50001:2011 RB/T114-2014

2.2

3



2.3

3

3.1

		2007 07 27
		2007 70
		2008 03 05
		(2008)14

3.2

3.2.1

3.2.2

VOCs

3.2.3

			()		t	t	
	HW11				730.12	17.98	

3.2.4

3.2.4.1

3.2.4.2

		dB(A)	
		60	GB12348-2008 2
		50	

3.3

2018 6 4

370725-2018-061-L

3.4

		365	4	4	4	4	
		365	4	4	4	4	
		365	4	4	4	4	
		365	4	4	4	4	
	1#	365	4	4	4	4	
	2#	365	4	4	4	4	
	3#	365	4	4	4	4	
	4#	365	4	4	4	4	

HW11 900-013-11

2019

730.12

38.04